

120T CRANE SHIP



GENERAL SPECIFICATION

Date Built	1985
LOA	47.6M
LPP	45.0M
Beam	17.0M
Draft – Operational	2.8 M
Draft (Max)	3.0 M
Light Ship Draft	0.75 M
Port of Registry	PANAMA
Flag	Panamanian
Call Sign	HO-3093
I.M.O. Number	8622452
Gross Tonnage	658 Mt
Net Tonnage	197 Mt
Deadweight	1060 Mt
Service Speed	6 knots
Deck Cargo Space	400 sq. meters
Deck Loading	10 MT / m 2
Accommodation	50

Note: Specification subject to change without prior notice

CLASSIFICATION

Class RINA
RINA class Number 81025
PONTOON-CRANE- Assisted Propulsion,
Unrestricted Navigation.
ISB Class number 03-06-029
**ISE; CRANE VESSEL; * IM
Certified I.S.P.S.

SAFETY EQUIPMENT

The vessel is outfitted with safety equipment to comply with the safety requirements as set out in the vessel safety plan in accordance with SOLAS

Fixed CO2 fire fighting systems complete with T100 Marine Controller Fire Monitoring Systems. Fire hydrants and extinguishers according to specifications

A comprehensive H2S and LEL detection is installed, comprising 4 deck mounted sensors, with remote monitors on the bridge.

PROPULSION AND MACHINERY

Main Engines

Make	2 x NIGATA IRONWORKS CO. (DIESEL)
Model	6MG 18CX
Cylinders	6
Rated Power	1,300PS
Rated Speed	950 rpm
Propellors	2 x Fixed Pitch With 4 Wings (Diameter 1.7m)

Main Generator

Model	D348 CAT 2 x Caterpillar synchronized
Capacity	2 x 468 KVA, 220V/380V, 50Hz

Emergency Generator

An emergency generator is fitted on the aft deck providing power for emergency supplies. Supplying Crane, Dive Control, ROV Control, Bridge and Engine Room.

Make	Perkins Diesel Engine
Rated Power	125 KVA
Combined Total Output	1MWatt

Sewage Treatment Plant:

Certified Hamworthy Super Trident-8

MOORING SYSTEM

The vessel has a 6-point mooring system with 3.7 ton Delta Flipper anchors

Winch	Single Drum
Make	APOA 7R Hydraulic
Manufacturer	Daido Heavy Machinery Co
Rated Capacity	12000 Kg f.
Rated Speed	10 / 12 mtrs / min
Wire	each 3000ft of 32mm dia
Video Monitoring System	
Bridge monitored remote payout & load meters	
Camford communications linked throughout	

TANK CAPACITIES

CAPACITY

Marine Gas Oil:	65 tonnes
Potable Water:	120 tonnes
Water Ballast:	374 tonnes
Lube Oil:	1000 Ltrs

ACCOMMODATION

BRIDGE Deck

- Control Console Area
- Radio Station
- Chart Area
- Survey Area
- ThurayaDSL broadband unlimited Internet access
- Ethernet networked computer systems & WLAN land based satellite system
- Video Monitoring of Dive Control and ROV Control
- Video Monitoring of Anchor Mooring Winches
- Remote Monitoring Systems of Anchor Winch Pay-out and Loading

CAPTAINS Deck

- 1 x 2 Person, Owners suite c/w Shower & Toilet
- 2 x 1 Person Clients Cabins
- 1 x 1 Master Cabin
- 2 x Shower & Toilet Bathroom

'A' Deck

- 4 x 2 Person Cabins
- Officers' Restroom
- Communal Toilet & Shower

'B' Deck

- 4 x Four Person Cabins
- Communal Toilet & Showers
- 2 Containerised Chiller/Freezer Units

3 x Containerised Units

- 3 x 4 Person Cabins
- Toilets & Showers

MAIN Deck

- Office Unit 40ft unit comprising:
Project Office: Fitted with two work stations. Linked to the whole vessel with networked with whole vessel by 100MB Ethernet LAN computer systems, Camford

FUEL CONSUMPTION

Cruising Mode	2.9 Ton / Day
On Anchor Pattern	0.5 Ton / Day
Lube Oil	16 ltrs / day (avg)
Water Production	16 Tons / Day

communications systems. VHF Base Station, Thuraya Base Station, Video Monitoring Systems linked to Dive Control, ROV Control, Client & Bridge. First Aid Station.

Client Office: One work station, Video Monitoring System, Camford communications system, VHF Base Station, computer network system.

ROV / Survey Control Room: Fitted for ROV Sea Eye Falcon, with control station & workshop facilities. Survey Installation available to Client / Project requirements. Camford Communications, Video and computer linked to whole vessel facilities. VHF Base Station.

Mess Room

Located on the Main Deck and designed for 20 persons at one sitting, complete with tables and chairs, refrigerators, service area, cooling units, TV/VCR

Laundry Room

- 2 basin wash sinks
- 3 Automatic washing machines
- 2 Tumble drying machines

Food Store/Preparation Room

- 5 Fridges
- 6 Freezers

Galley

Engineers Store
Deck Toilets
Dive Control (option)
BWOC Surface Air /Mixed Gas Dive systems may be installed according to Client / Project requirements. All systems are IMCA certified.

Modular accommodation units can be added subject to client requirements (see pages 8 and 9 for a possible arrangement).

NAVIGATION AND COMMUNICATION SYSTEM

The prime equipment includes:

VHF Sailor	2 sets
SSB ICOM	2 sets
GMDSS – Area A1, A2 and A3 (International)	
INMARSAT ‘C’ Satellite System.	
Radar ICOM	1 set
Radar Concilion ARPA	1 set
SART Toyo Musen	2 sets.
Gyro Compass / Weather fax / Navtex	
2 DGPS & 1 DGPS Chart plotter	
Echo Sounder (dual digital and paper)	
E.P.I.R.B.	
A.I.S. as required for ISPS	

Camford Hard wire communication systems to Bridge, Crane, Dive Control, ROV/Survey Control, Project Office and Engine Room.

100 Mb Ethernet LAN connecting 2 offices, bridge and owner / client cabins.

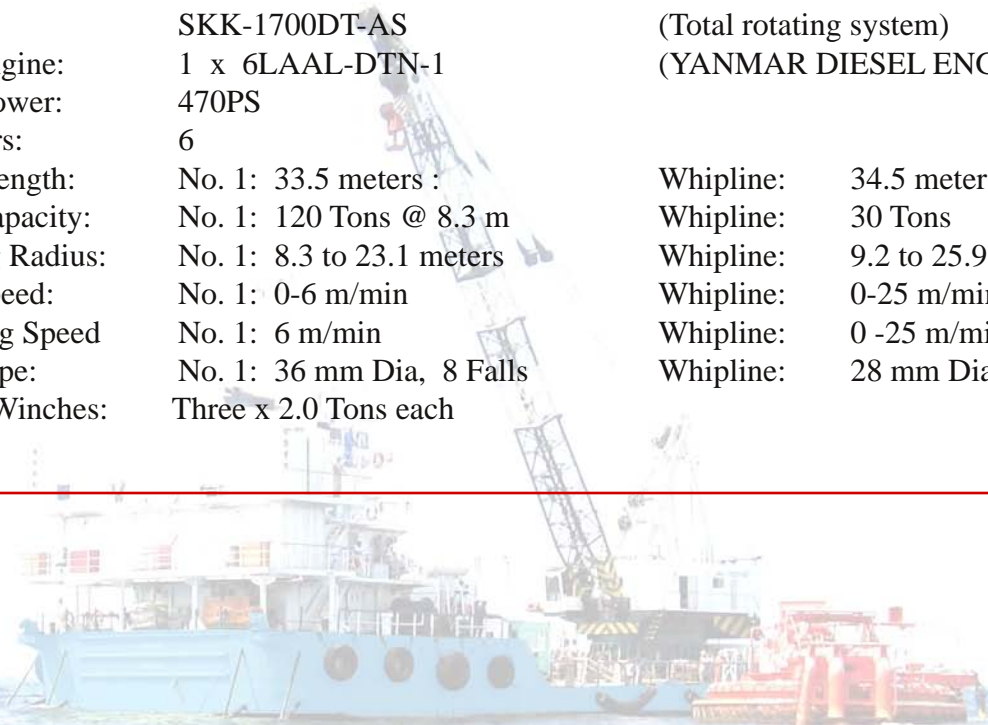
Internet access via ThurayaDSL and/or WLAN and landbased satellite system (up to 20 km).

Live Data Link to head office providing file transfer, emails, intranet connectivity with Sharjah Base Offices using “TCP over PPP” through HF Radio technology.



MAIN CRANE

Model:	SKK-1700DT-AS	(Total rotating system)
Main Engine:	1 x 6LAAL-DTN-1	(YANMAR DIESEL ENGINE)
Rated Power:	470PS	
Cylinders:	6	
Boom Length:	No. 1: 33.5 meters :	Whipline: 34.5 meters
Hook Capacity:	No. 1: 120 Tons @ 8.3 m	Whipline: 30 Tons
Working Radius:	No. 1: 8.3 to 23.1 meters	Whipline: 9.2 to 25.9 meters
Hoist Speed:	No. 1: 0-6 m/min	Whipline: 0-25 m/min
Lowering Speed	No. 1: 6 m/min	Whipline: 0 -25 m/min
Wire Rope:	No. 1: 36 mm Dia, 8 Falls	Whipline: 28 mm Dia, 2 Falls
Tugger Winches:	Three x 2.0 Tons each	



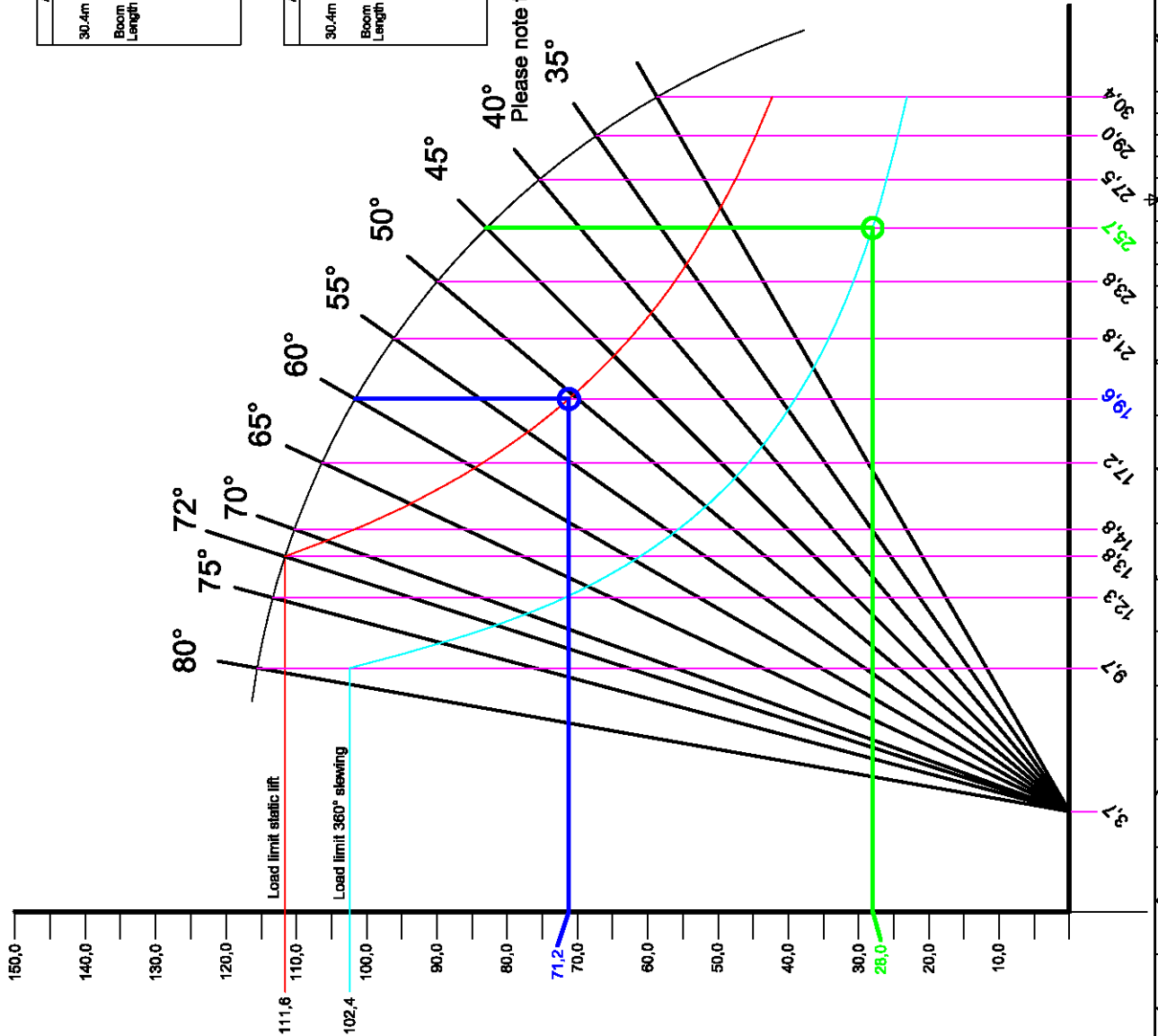
SKK-1700DT-AS onboard MV Craic

360° Slewing

Angle degrees		30	35	40	45	50	55	60	65	70	75	80
30.4m Boom Length	Main	23.1	24.4	26.0	28.0	30.7	34.2	39.0	45.8	55.8	71.8	102.4
	Holist	30.4	29.0	27.5	26.7	23.8	21.8	19.6	17.2	14.6	12.3	9.7
Aux		20										
Holist	Load (mT)	33.2	31.6	30.0	28.1	26.0	23.7	21.3	18.8	16.1	13.4	10.6
	Radius (meter)											

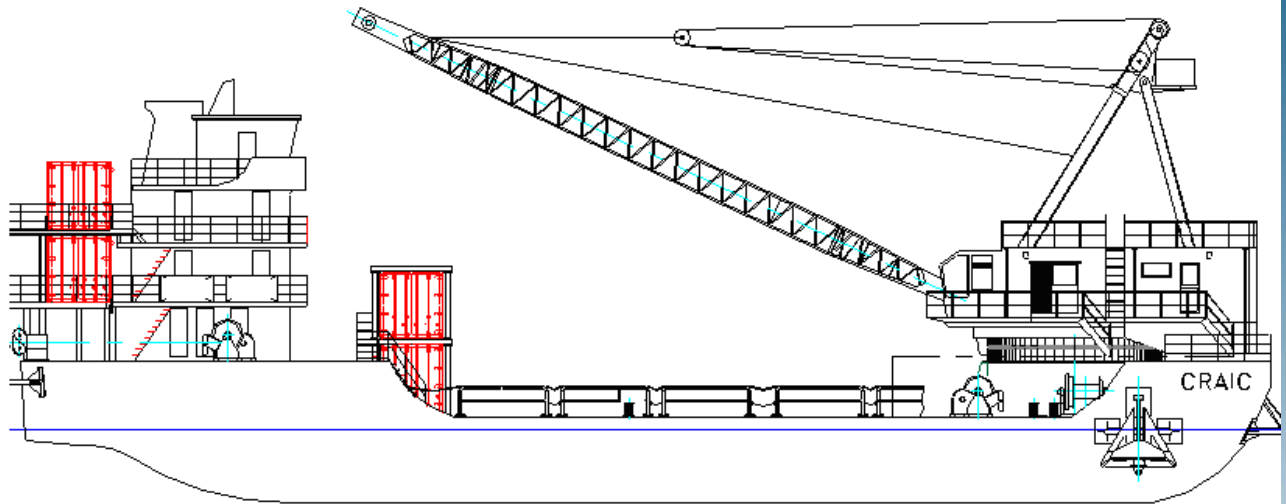
Static Lift

Angle degrees		30	35	40	45	50	55	60	65	70	75	80
30.4m Boom Length	Main	42.3	44.6	47.5	51.3	56.1	62.6	71.2	83.4	101.8	111.6	
	Holist	30.4	29.0	27.5	25.7	23.8	21.8	19.6	17.2	14.6	12.3	9.7
Aux		30										
Holist	Load (mT)	33.2	31.6	30.0	28.1	26.0	23.7	21.3	18.6	16.1	13.4	10.6
	Radius (meter)											

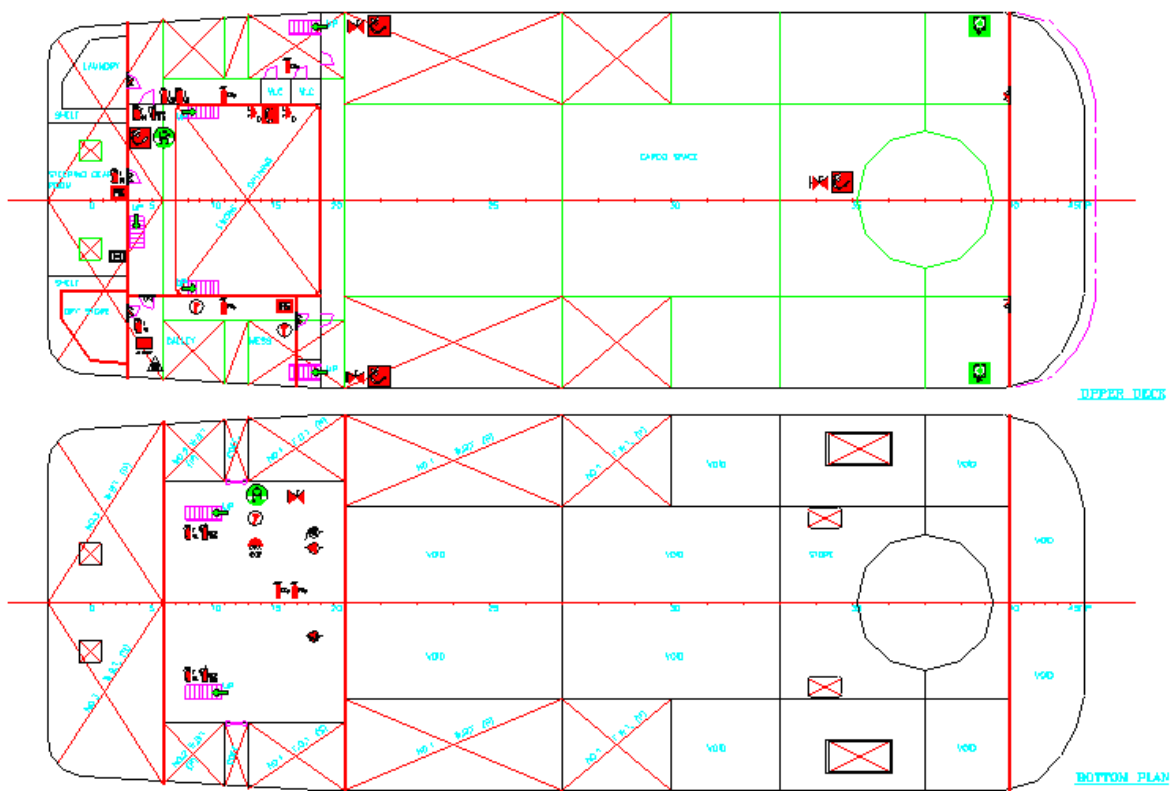


Please note that for clarity, values for auxiliary hoist are NOT shown in the graph

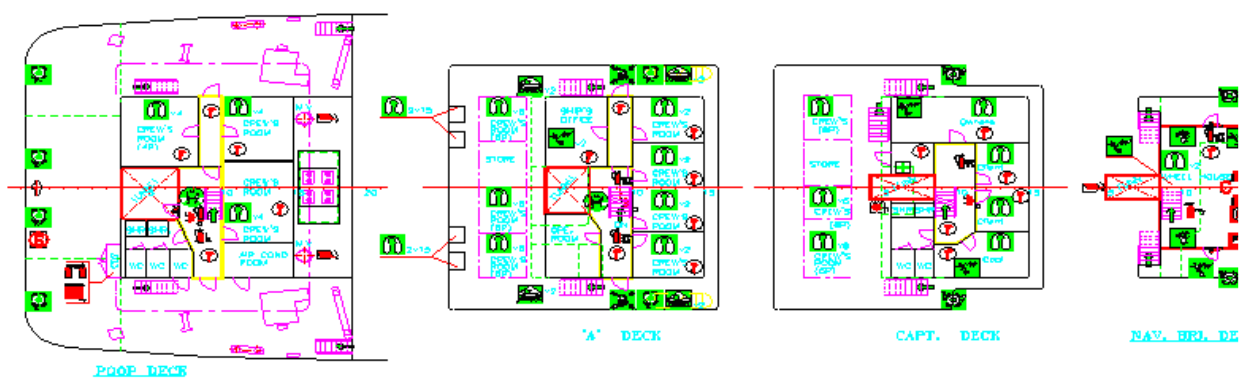
SKK 1700DT-AS		REV. 1	
TITLE: SKK 1700DT-AS CRANE LOAD CHART MV Craic JOB NO.: DRAWING NO.: DATE:			
DESIGNED BY:	CHECKED BY:	DATE:	SCALE:
DRAWN BY:	APPROVED BY:	DATE:	SCALE:
PROJECT NO.: CONTRACT NO.:			

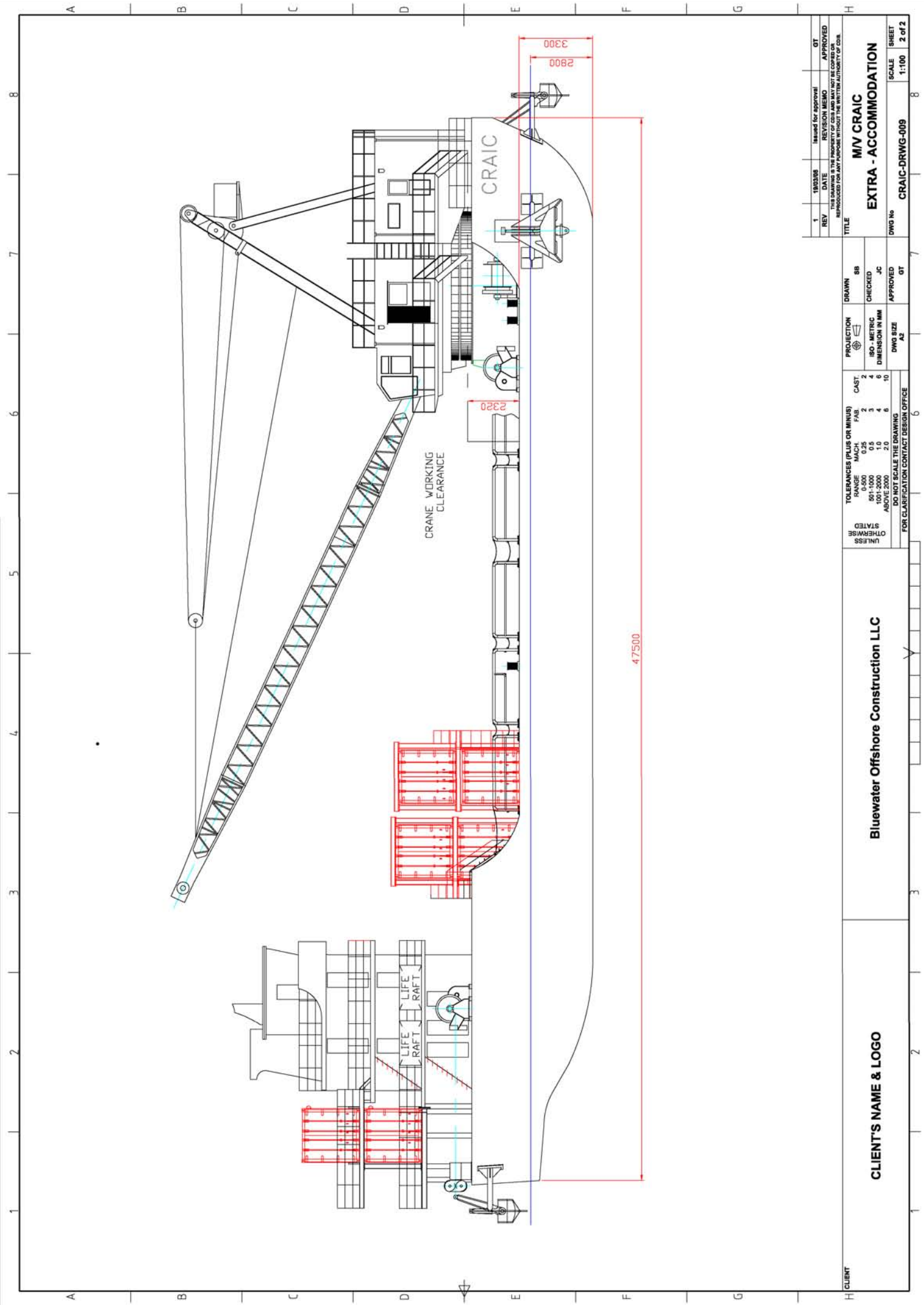


Deck Plan



Accommodation Plan



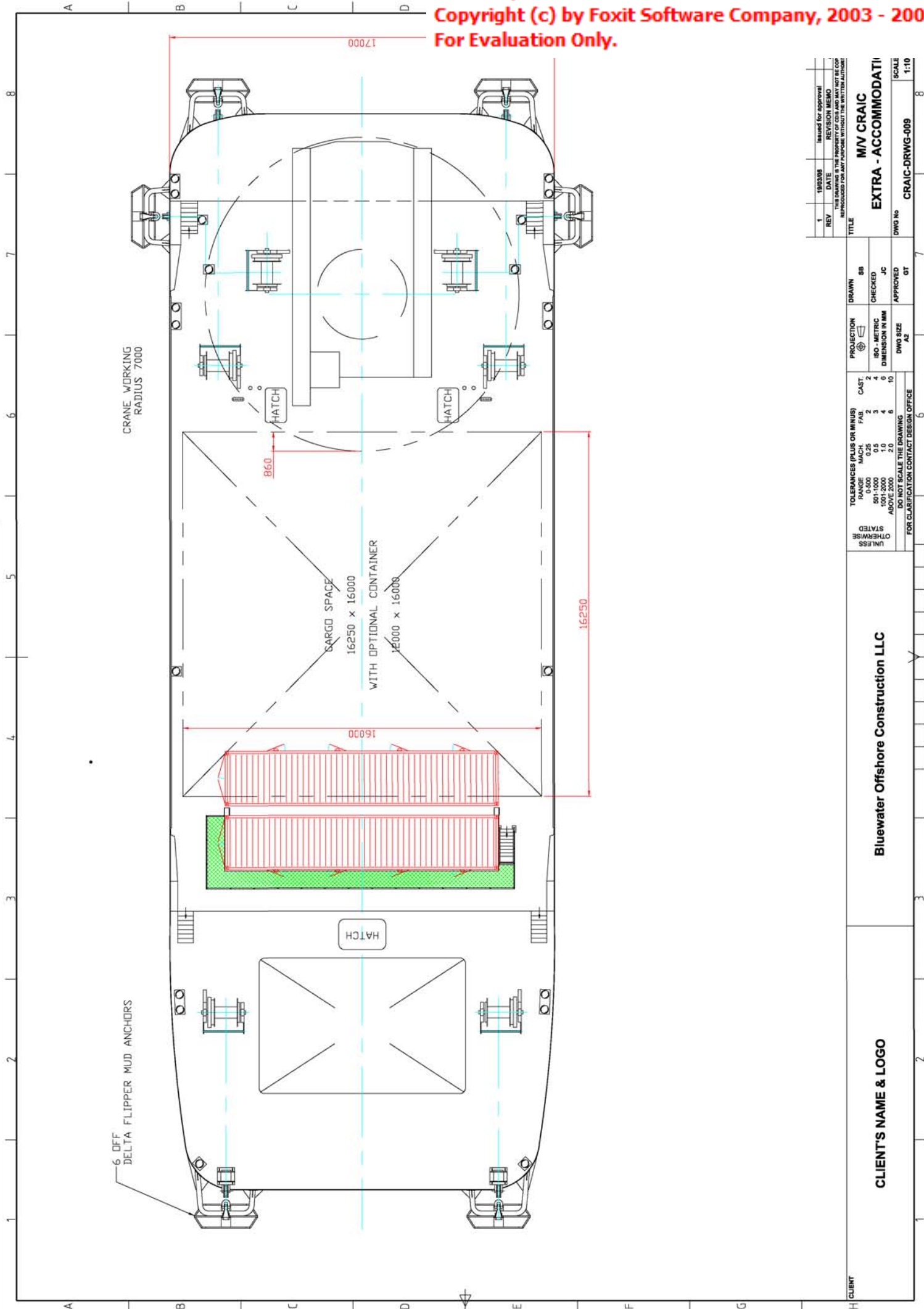


REV	1	190308	Issued for approval	GT
DATE			REVISION MEMO	APPROVED
<small>THIS DRAWING IS THE PROPERTY OF BLUEWATER OFFSHORE CONSTRUCTION LLC. IT IS TO BE USED ONLY FOR THE PROJECT AND VESSEL SPECIFICALLY IDENTIFIED HEREIN. IT IS NOT TO BE REPRODUCED FOR ANY PURPOSE WITHOUT THE WRITTEN AUTHORITY OF COB.</small>				
TITLE MV CRAIC EXTRA - ACCOMMODATION				
DWG No	CRAIC-DRWG-009			SCALE
				1:100
				SHEET
				2 of 2

PROJECTION	1st Angle	SB
DRAWN	SB	
CHECKED	JC	
APPROVED	GT	
PROJ. DIMENSION	MM	
DWG SIZE	AZ	

CLIENT'S NAME & LOGO Bluewater Offshore Construction LLC	
<small>FOR CLARIFICATION CONTACT DESIGN OFFICE</small>	

TOLERANCES (PLUS OR MINUS)	
RANGE	MACH. FAB. CAST.
0-500	±0.25 ±0.25 ±0.25
501-1000	±0.25 ±0.25 ±0.25
1001-2000	±0.25 ±0.25 ±0.25
2001-5000	±0.25 ±0.25 ±0.25
ABOVE 5000	±0.25 ±0.25 ±0.25
<small>DO NOT SCALE THE DRAWING</small>	



REV	1	19/03/08	Issued for approval
DATE			REVISION MEMO
THIS DRAWING IS THE PROPERTY OF BLUEWATER OFFSHORE CONSTRUCTION LLC IT IS TO BE USED ONLY FOR THE PROJECT AND VESSEL SPECIFICALLY IDENTIFIED HEREIN. REPRODUCTION FOR ANY PURPOSE WITHOUT THE WRITTEN AUTHORISATION IS PROHIBITED.			
TITLE			
M/V CRAIC		EXTRA - ACCOMMODATI	
DWG No	CRAIC-DRWG-009	SCALE	1:10
CLIENT	Bluewater Offshore Construction LLC	CLIENT'S NAME & LOGO	
TOLERANCES (PLUS OR MINUS) RANGE MACH. FAB. CAST. 0-500 0.25 2 501-1000 0.5 3 1001-2000 1.0 4 ABOVE 2000 2.0 6 10		PROJECTION DRAWN SIB ISO - METRIC CHECKED DIMENSION IN MM J.C.	
UNLESS OTHERWISE STATED DO NOT SCALE THE DRAWING FOR CLARIFICATION CONTACT DESIGN OFFICE		DWG SIZE APPROVED GT A2	