

36M ANCHOR **HANDLING/** **COASTAL TUG**

SALE: NELSON II **USING MEDIUM SPEED ENGINES**



NELSON II - CURRENTLY UNDER CONSTRUCTION

PRINCIPAL PARTICULARS - 36M AHT/COASTAL TUG

Owners	J/V company
Type of Vessel	Tug/Utility Supply
Classification	BV 1 3/3 + Coastal
IMO No	
Builder	Appointed shipyard
Equipment Type	International & Chinese make
Keel laid	2009
Delivery	4 th quarter 2010

DIMENSIONS AND PERFORMANCE

Length OA	36.00 m
Breadth Mld	10.80 m
Depth Mld	5.00 m
Draft Mld (design)/max	4.00 m
Cargo Deck Area	abt 144 sq m (18m x 8 m)
Speed	± 10.5 k (Service)
Bollard Pull	± 53 t (abt)
Range	± 25 days (subj to final tankage layout)

TANK CAPACITIES (100% approx)

OTHER INFORMATION

Fresh water	± 116 M3	Name	NELSON II
Fuel Oil (total)	± 350 M3	Tonnage	443 abt
Water ballast/Drill water	± 26 M3	Call Sign	9V8598
Liquid Mud (total)	± NA	Off No.	395999
Dry Bulk cement	± NA	MMSI	Pending
L.O. storage	± 4 M3	POR	Singapore
Hydraulic Oil	± NA		
Foam	± NA		
Dispersant	± NA		
Dwt	± Pending		

MACHINERY AND PROPULSION

Main Engine	2 X 2,200 hp @ 750 rpm Daihatsu type 6DKM-26F(L)
Propellers	2 x fixed pitch i(Kaplan) n nozzle
Bow thruster	1 x 3 tonne - fixed pitch type coupled to electric motor 125 Kw.
Generators	2 x 250 KW – voltage 415/230/3/50 hz, manual synchronising
Emergency Generator	1 x64 KW radiator cooled
Oily Water separator	1 x 0.5 tonne with alarm
Bridge consol forward and aft	Monitoring panels main, aux. Bow thruster and vessel's navigation aids.
Sewage Treatment Plant	1 x 16 men Biological plant
Main engine coolers	Heat exchanger
Lube n Fuel Oil purifiers	Nil
Water Maker (RO)	Nil
Air condition and cold room plant – Cold store – 10 M3 at -18C Chiller – 10 M3 at +4 C	1 x high pressure typefor accommodation. Separate unit w/house and ECR 1 x Refrigerant plant
Centralised monitoring system	Maker's audio visual supply in wheelhouse main engine

NAVIGATION AIDS

Radar	1 x Furuno FR 1505 Mk 3
Echo sounder	1 x Furuno FE 700
Bearing repeaters	Nil
Speed Log	1 x Furuno DS - 80

GPS	1 x Furuno GP 150
* Gyro compass	1 x Tokimee TG 800 (to be confirmed)
Gyro repeater	Nil
* Magnetic compass	1 x Daiko Keiki 150PK reflector type
* Auto pilot	1 x Simrad AP35 (or AP 50)
Weather fax	1 x JMC FX 220
AIS	1 x Furuno FA 150
Printer	2 x Furuno PP-150
MF/HF DSC radio	1 x Furuno MF/HF 1570
VHF – DSC radio	2 x Furuno FM8500
IMC – C	2 x Furuno Felcom-15 Inmarsat C
Portable VHF	3 x ICOM GM 1600 with spare chargers
Navtex	1 x Furuno NX 700B
EPIRB	1 x McMurdo ES
Radar Transponder	1 x ACR Pathfinder 3
INMart-F	Nil
CCTV	option
Intercom with PA	1
Sound Power Telephone	1 to confirm (hand crank)
Auto telephone exchange	Nil
* Denotes	Either / Or

DECK EQUIPMENT (HYDRAULIC)

Tow/Anchor handling water fall winch	1 x Waterfall winch Capacity: 48mm x 750 m rope with tension meter
Storage drum winch	1 x option
Tugger winch (hydraulic)	1 x 5 t pull
Capstan (hydraulic)	1 x 2 t pull at 15m/min
Windlass (hydraulic)	1 x windlass rated 3 t at 10 m/min
Anchor chains	22 mm dia. x U-2 stud links to be finalized
Anchors	2 x 660 kgs
Mooring ropes	4 x 120 m PP ropes
Guide pins and shark jaw	1 x 100 t with guide pins
Provision crane	Nil

CARGO PUMPS AND FIRE FIGHTING & EXTERNAL FI FI

Dirty Fuel Oil pump	1 x 10m ³ at 18m head
Ballast/Bilge pump	1 x 35 cu m at 30 m head
General Service/Fire pump	1 x 35 cu m at 30 m head
Emergency Fire Pump	1 x 25 cu m at 30 m head /with engine
FW Cargo Pump	1 x 25 cu m at 20 m head
FW pressure set	1 x 2 cu m at 40 psi
SW pressure set	1 x 2 cu m at 40 psi
External fire fighting pump	2 x 450 to 550 cu m at 12 bar
Fire monitors	2 x 600 cu each one dual barrel water/foam To be finalised
Foam System	1 x option
Fixed Water Spraying	Not applicable
Oil dispersant Booms	2 x option
Fixed Gas Detection	Nil

ACCOMMODATION

CREW (15 Total)	2 x 1 man, 1 x 2 men, & 3 x 4men
Sickbay	NIL
Laundry	1 washer and 1 dryer
Mess room	6 persons seating
Recreation room	Common with mess
Toilets n wash place	All cabins attached

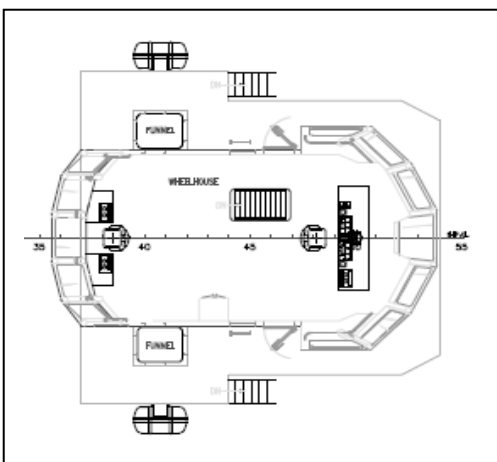
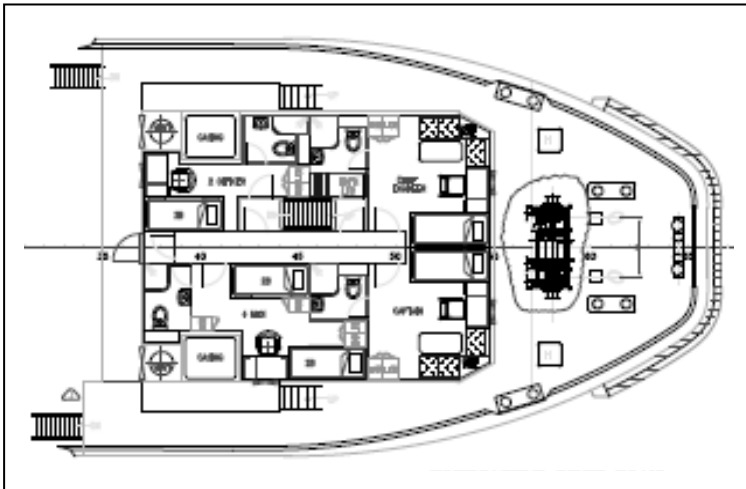
INFORMATION SUBJECT TO CHANGE

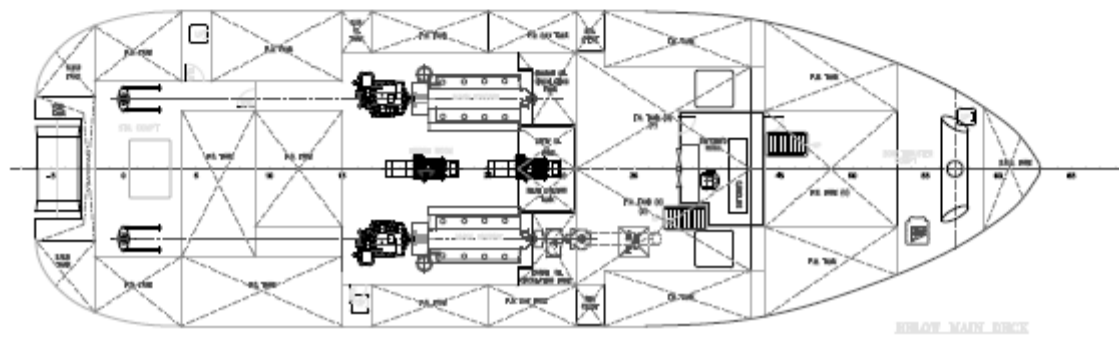
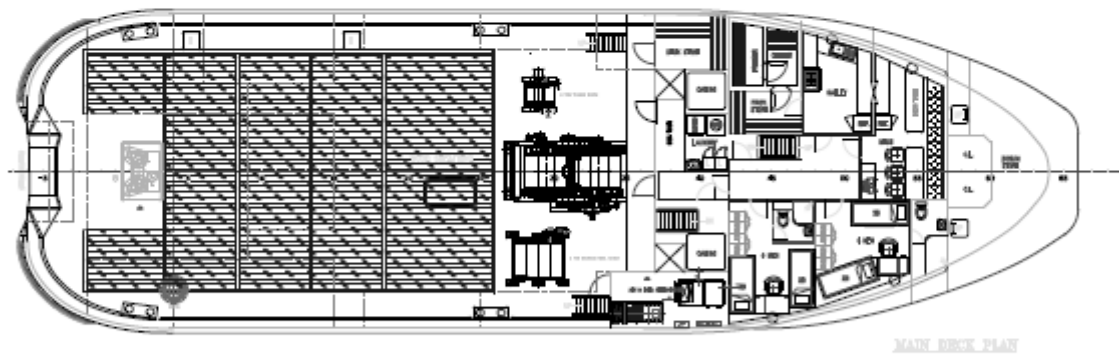
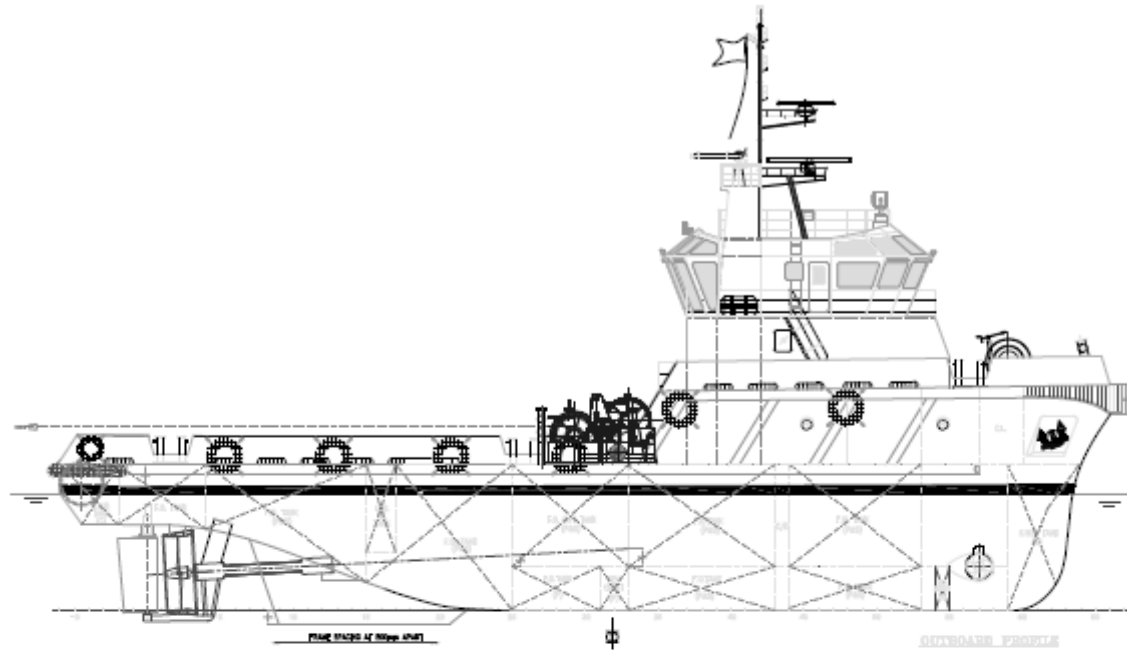
SKETCH OF PROPOSED VESSEL

PRINCIPAL DIMENSIONS

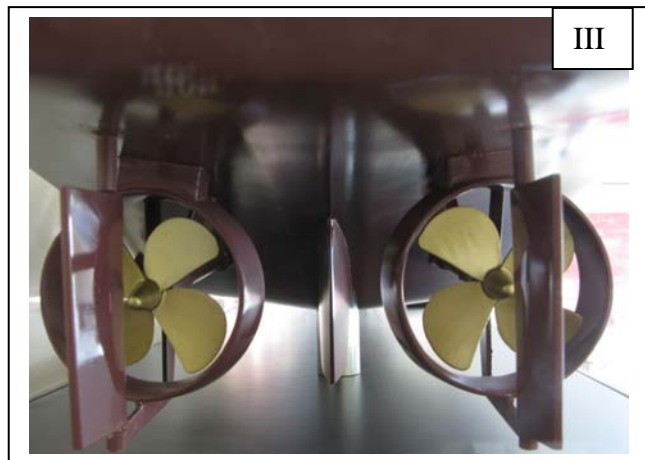
UTILITY / COASTAL TUG

LENGTH OVERALL	36.00 M
LENGTH WATERLINE	34.71 M
BREADTH MOULDED	10.80 M
DEPTH MOULDED	5.00 M
EXTREME DRAFT MOULDED	4.00 M
COMPLEMENT	16 MEN
FUEL OIL	350 M ³
FRESH WATER	100 M ³
TOTAL POWER	2 X 1618KW @ 750RPM
TRIAL SPEED	ABT 11 KNOTS
BOLLARD PULL (AHEAD)	53.0 TONNES





MODEL OF PROPOSED TUG



I = UNDERWATER PROFILE

II = END VIEW

III = PROPELLERS IN NOZZLES

IV = PLAN VIEW MAIN DECK

