

**PARTICULARS**

Year Built : 2009  
Class : ABS + A1, HSC Crewboat + AMS  
Type : Crew/Utility Vessel  
Flag : Malaysia

**DIMENSION**

Length Overall : 40.38 m  
Breadth Moulded : 7.80 m  
Depth Moulded : 3.40 m  
Draft Moulded : 1.30 m  
GRT : 270 MT  
NRT : 81 MT

**PERFORMANCE**

Speed : 24.0 knots (max)  
: 18.0 knots (economical)

**CARGO CAPACITIES**

Deck Cargo : 40 MT  
Deck Strength : 2.0 MT/m<sup>2</sup>  
Clear Deck Area : 100 m<sup>2</sup>  
Fuel Oil : 100 m<sup>3</sup>  
Fresh Water : 19 m<sup>3</sup>

**PROPULSION SYSTEM**

Main Engine : 3 x 1,400 BHP @ 2300 RPM  
Caterpillar C32  
Main Generator : 2 x 90 kW Powerdrive AC Marine  
Bow Thruster : 1 x 60 HP Petter's S60-80  
Propellers : FPP

**NAVIGATIONAL/COMMUNICATION**

GMDSS : Furuno RC1800T GMDSS A3  
VHF Radio : 1 x Furuno Radiotelephone FM-8800S  
SSB Radio : 1 x Furuno Radiotelephone FS-1570  
Radars : 1 x Furuno Marine Radar 1932 MK2, 48 nm  
: 1 x Furuno Marine Radar FR-1505 MK3, 96 nm  
GPS : 1 x Furuno Navigator GP-150  
SART : 2 x McMurdo S4  
Inmarsat : 1 x Nera WorldPhone Inmarsat Mini-M  
EPIRB : 1 x McMurdo E3A  
Navtex Receiver : 1 x Furuno Receiver NX-700  
Echo Sounder : 1 x Furuno FE-700  
Gyrocompass : 1 x Anschuetz Standard 22 Compact  
Autopilot : 1 x Ratheon Nauto Pilot NP 60  
Wind Indicator : 1 x Navman Wind 3150  
PA System : 1 x Vingtor Marine ETB  
AIS : 1 x Furuno FA-150

**ELECTRICAL (DECK OUTLET)**

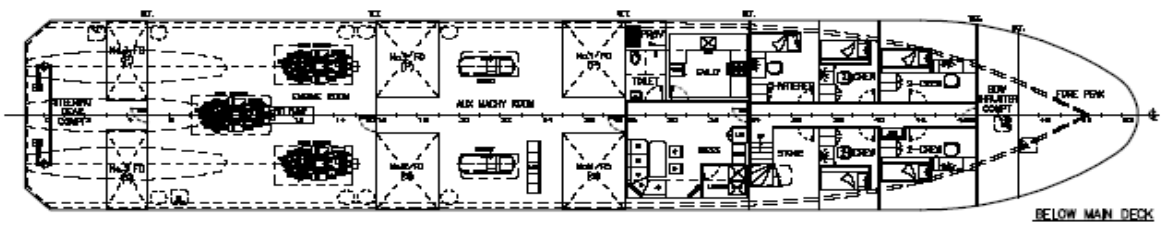
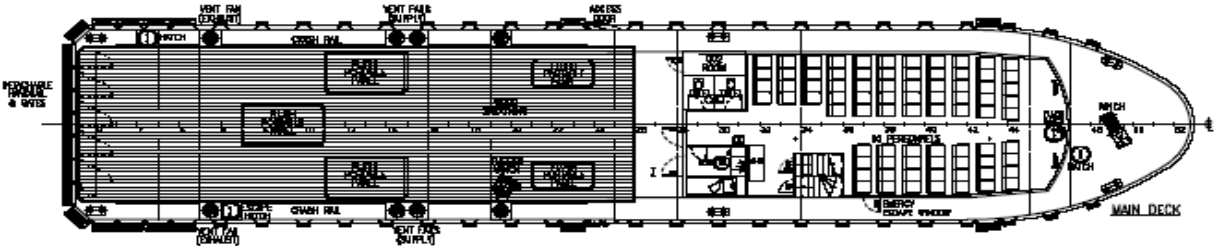
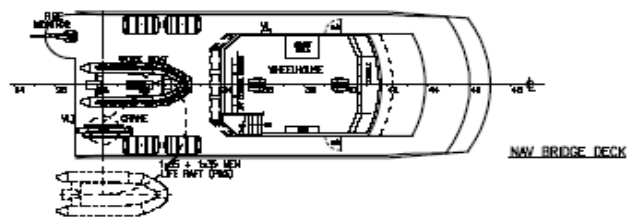
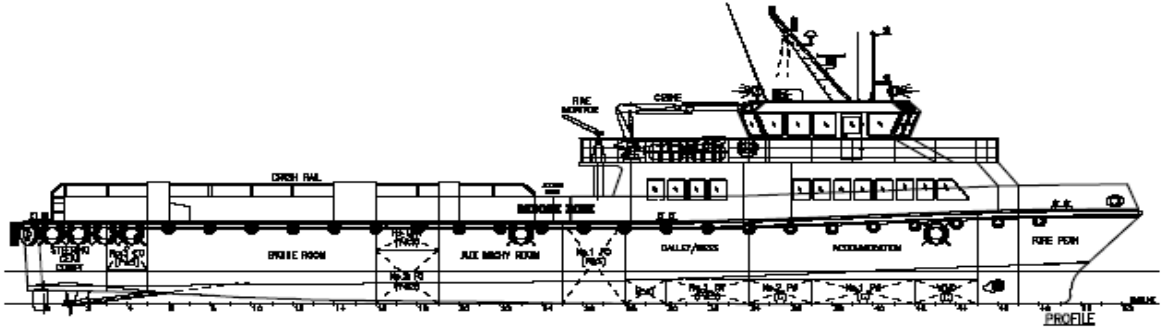
Quantity : 6 nos.  
Power Supply : 415V/ 3 Phase/ 50 Hz  
Shore Power : Yes  
Connection

**ACCOMMODATIONS**

Seating : 80 Business Aircraft Seats  
Crews : 8 men  
Airconditioning : Water cooled  
Galley : Domestic Style  
Store : On deck  
Toilets : 3 units for Passenger use  
Entertainment : TV linked to CVC and DVD

**SOLAS AND EMERGENCY RESPONSE**

Life Raft : 4 units (65 men)  
Lift Jackets : 100  
Life Buoys : 6 units  
Scrambling Nets : 2 units  
Deck Spray Shield : Yes  
Oil Dispersant Boom : Yes  
Rescue Boat : Yes



Approved By :  
On :

**PRINCIPAL DIMENSIONS**

- LENGTH OVERALL ..... 40.327 m
- LENGTH WATERLINE ..... 38.029 m
- BREADTH MOULDED ..... 7.80 m
- DEPTH MOULDED ..... 3.40 m
- DESIGN DRAFT (MLD) ..... 1.30 m
- PERSONNEL ..... 80
- ABS ●A1 ●AMS HSC UTILITY CREWBOAT

Rev	Revision	By	Date
<b>SAM ALUMINIUM ENGINEERING PTE LTD</b>			
27-A Wangsat Road Singapore 437882 Tel: 6733 8888 Fax: 6733 8888			
Drawn	AWB	Checked	1:125
Project	SASASHIP 40m UCB	Client	SUK
Scale	40m UTILITY CREWBOAT	Contract No.	TUMY 98ET
Sheet No.	GENERAL ARRANGEMENT	Sheet No.	POB40-C1
			0

