

Anchor Handling Tug Supply Vessel - 12,700 bhp

PORT OF REGISTRY: BELIZE

Year Built : 1982 Appeldor, Devon UK.
Classification: DNV+1A1 TUG-FI-FI II-EO-IDEC-DK+.
Length Overall : 69.30 m
Length bpp : 61.50 m
Breadth Moulded : 15.50 m
Draft - Loaded: 6.35 m
Deadweight (approx.) at 6.35 m draft:2,085 t.
Gross Tonnage : 2024 tons
Nett Tonnage : 607 T

CARGO CAPACITY

Fuel Oil: 590 m3
Portable Water: 256 m3
Drill Water / Ballast : 1047 m3
Brine : 429 m3
Liquid Mud: 262 m3, Cement In Bulk: 278 m3
Deck Cargo: 800 tons Clear Deck Space: 37m x 13 m
Deck Strength : 5 Tons/m2

REFRIGERATED STORAGE CAPACITY

Deep Freezer: 7.5 m3
Cool Room: 7.5 m3

PROPULSION

Main Engine: 4 x 3,180 BHP (B&W Alpha). Total : 12700 BHP
Main generators shafts: 2 x 1200 KW 440V; 60 Hz
Auxiliary engines: 2 x 210 kW (Cat) 440 V,60 Hz.
1 x 83 kW (Cat) 440 V,60 Hz.

THRUSTERS

Tunnel bow thrusters: Ulstein 1x 500 BHP.
Ulstein 1x 600 BHP.
Tunnel stern thruster: Ulstein 1x 500 BHP.
Rudders: 2 independent rudders with active flap.

FIRE FIGHTING EQUIPMENT

FiFi Class II

NAVIGATION EQUIPMENT

1 joystick fitted Siemens Mansi-Fom.
1 radar (Kelvin Hughes).
1 radar (Furuno RDP-060).
1 gyrocompass (Arma Brown MK 10).
1 Log (Raytheon DSL-350).
1 Echo sounder (Kelvin MS 45).
1 Autopilot (Decca 550 Gm Pilot 41E89 NO 14).
1 Satellite navigator (Furuno GP 80).

COMMUNICATION EQUIPMENT

GMDSS A3 (Full Sailor Compact)
MF/HF Transmitter (Sailor Compact 2000).
MF/HFDSC Controller.
VHF 1 (Sailor RT 2048).
VHF 2 (Sailor RT 2048).
VHF 3 (Sailor RT 2042).
DSC Controller (Sailor).



ACCOMMODATION

17 persons
5 x 1 man cabins
2 x 2 men cabins
2 x 4 men cabins
1 x Galley
1 x mess room
Seating Capacity: 20 Persons, Fully Air-Conditioned

ANCHOR HANDLING EQUIPMENT

Brattvaag D.D. waterfall type with spooling device
Brake: 350 tons brake
Chain Gypsies: 2 for 3-3 1/4" chain
Drum capacity: 1200m x 2.75" wire
Towing Wire : 1150 m x 2.75"
Spare Tow Wire : 1150 m x 2.75"
Work Wire : 600 m x 2.75"
Tugger Winches: 2 x 10 tons
Towing Pins : 2 x Karm Fork
Shark Jaw: 2 x Karm Fork
Capstan : 2 x 8 tons
Deck Crane : HIAB Sea Crane 5.
ChainLocker: 270 m3; 2,320 m/K 84.

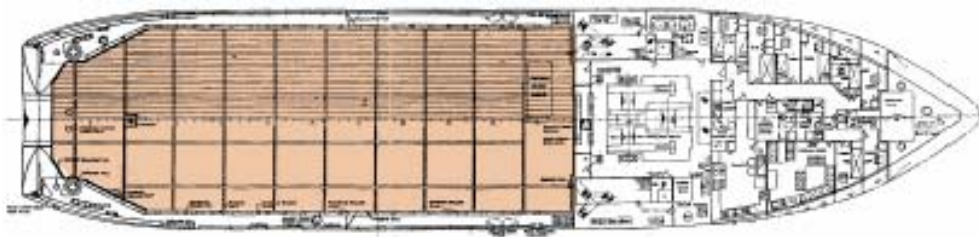
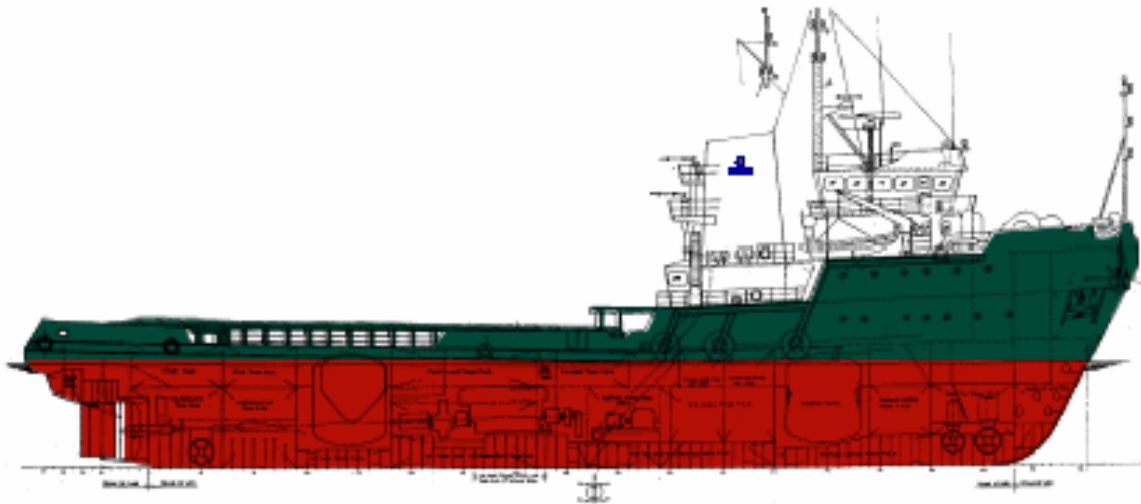
CARGO PUMP CAPACITY

Fuel Oil: 130 m3/hr @ 90m head
Portable Water: 100 m3/hr @ 90m head
Drill Water: 100 m3/hr @ 90m head
Flowmeter: 01 unit Fuel, 01 unit Water
Liquid Mud: 51 m3/hr @ 60m head
Brine : 95 m3/hr @ 90m head
Cement in Bulk: 4.47 m3/min at 80 m.

PERFORMANCE

136 Tons Continuous
Consumption (approx) : 43 m3/day at 15.4 knots.
Econ. speed: 15 m3/day at 11 knots.
Maxi speed (approx): 15.4 knots.

All particulars believed to be correct but not guaranteed



AHTS is a Supply Vessel of Appeldor design. This vessel is a "Medium Power" vessel. She has also been awarded Fi-Fi II and Canadian stand-by classifications. She is suitable for « Medium » towing duties and anchor-handling tasks.

- EW.
- WB.
- EO.
- Dry bulk