

Built : 1983 Eisleth Germany
Flag : Panama
Port of Registry : Panama
Call sign : HO4479
Official No. : 8201741
Classification : Lloyd's: +100A, +E1 tug/supply
 "Offshore Tug/Supply Vessel" LMC UMS

CARGO CAPACITIES

Dead Weight : 1700 tons at 5,98 m, draught(=S),
 : 1600 tons at 5,86 m, draught (=V),
Deck cargo : 500 tons
Clear deck space : 38,5 x 11 m, total: 423,5 m²
Deck strength : forw, frame 45 : 5/sqsm
 : aft of frame 45 : 7/sqsm
Fuel oil : 582,0 m³
Base oil (max) : 263,0 m³
Drill water : 420,0 m³
Liquid mud/brine : 470,0 m³ (3000bbls)
Potable water : 453,0 m³
Dry bulk : 2 tanks 62,3 m³
 : 2 tank 65,7 m³
 : Total: 256 m³

MACHINERY / PROPULSION (direct diesel drive)

Main engines : 2 MWM four-cycle Diesel engines
 Type: MWM TBD 510 L8, total 9,280 BHP
Propellers : 2 C.P. propellers in fixed nozzles
Bow thruster : C.P. thruster, 680 BHP, 500 Kw,
 Lips, electric driven
 Thrust: 10 tons
Bollard pull : 108 tons
Generators : Two shaft generators type AEG 687 KVA
 Two diesel generators type AEG 330 KVA
Power supply : 450V - 3 phase - 60 Hz
 230 - AC - 60 Hz
 24V - DC
 To cargodeck consumers / container plugs
 1 x 450V / 3 phase / 63 Amp CEE 440V
 1 x 450V / 3 phase / 25 Amp CEE 440V
Speed : Max 15,5 knots
 Fuel consumption in tons/day:
 10 knots at 6,2 tons
 12 knots at 12,5 tons
Rudders : 2 x "flap" type, synchronically controlled
Miscellaneous : Sewage plant, fuel oil separator, lubeoil separators,
 Halon fire smothering equipment in engine room,
 fully equippd workshop.

NAVIGATION EQUIPMENT

Joystick : AEG-Geopos
Gyro Compass : Anschutz -Standard 6
Magnetic Compass : AP Navigator Dantronik
Autopilot : Anschutz 102 834N6
Radar 1 : Decca Racal - Bridgemaster
Radar 2 : Furuno FR 1221 NS
Radio Dir. Finder : Kodon KS 540 K
Navtex : J.R.C. N.C.R. 300A
GPS Navigation : J.R.C. Raystar 920
Decca Navigator : AP Dantronik
Echo Sounder : Atlas Echograph 481

COMMUNICATION EQUIPMENT

Radiotel, MF/HF Transmitter : Sailor T1127 L
Watchreceiver (distress) : Sailor RS01
Life-boat radio : Skanti-TRP 1
VHF 1 : Sailor RT148 Duplex
VHF 2 : Sailor RT148 Duplex
Satcom C : Capsat Thrance & Thrane 3020B

Walky Talky : 3 x ICOM IC-M12H
VHF Comm. 2000 (airplanes) : Becker Flugfunk
VHF Direction Finder : SIMRAD NW
EPIRB : Jotron-305 Mk II
Internal Comm. System : A.E.G./Phonico P-2591
Mobile phone (for network communication)
STRT : Jotron-Tronsart

ACCOMMODATION

Crew : 12 single cabins
 : 1 x 2 + 2 x 4 person cabins
Passengers : 10,1 x 2 + 2 x 4 person cabins
Recreation room : 1 x 16,0 m²
Messroom : 1 x 21,0 m²
 Accommodation fully air conditioned/heated

REFRIGERATED STORAGE CAPACITY

Cold store : 8,3 cbm at -20°C
Cooled store : 8,5 cbm at +4°C

DECK MACHINERY

Windlass : Hydraulic driven
 max. pull 16 tons
Anchor/chain : 2 x 21 shackles (32 m/m chain) + 1,5 tons anchor
Deepsea Anchor : Drum with 1500m, 36m/m wire + 1,5 tons anchor
Capstans : 2 x hydraulic driven
 max pull 11 tons
Tuggers : 2 x hydraulic driven
 max. pull 7/11,4 tons
Towing/AH winch : Hydraulic driven
Towing drum:
 capacity 1650 m of 76 mm diam wire
2 x AH drum:
 capacity 1000 m of 62 mm diam wire
 max. pull 250 tons
Wildcats : Max. pull 250 tons, 3"
Crane : Electric Hydraulic SWL 2 tons 8 mtr
Storage reels : 2 hydraulic driven
 capacity 1200 m of 70 mm, diam
 1500 m, of 62 m, diam
 length 4,0 m, diam, 1,85 m
Stopperpins : 2 hydraulic driven (remote controlled)
 Make:Karmoy,,tons SWL
Guide Pins : 2 hydraulic remote controlled pins Karmoy,
 2 hydraulic remote controlled

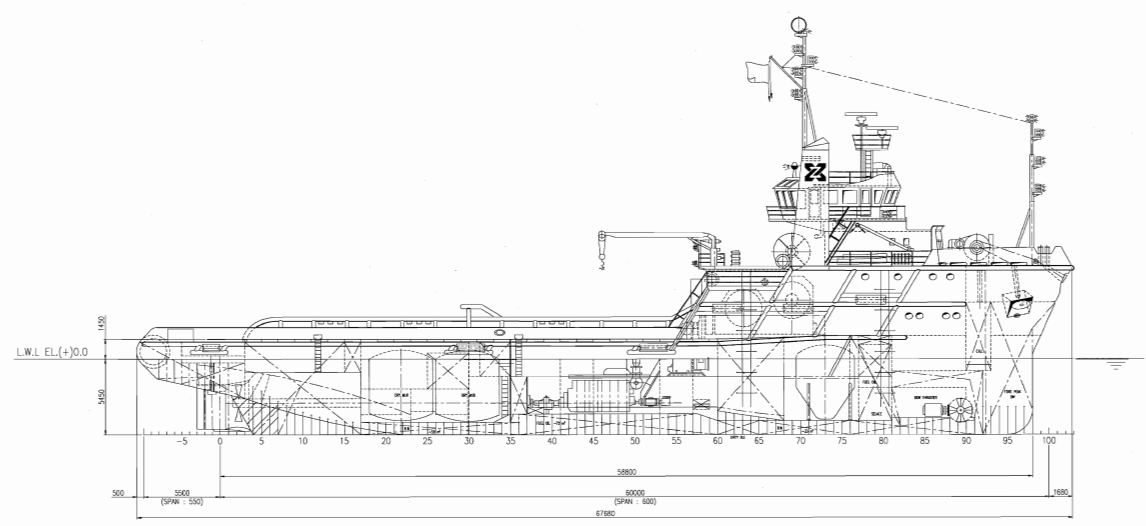
CARGO PUMPS/DISCHARGE RATES

Exact rates are depending on discharge height to the platform and piping lay out on the platform.

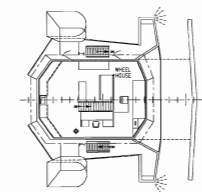
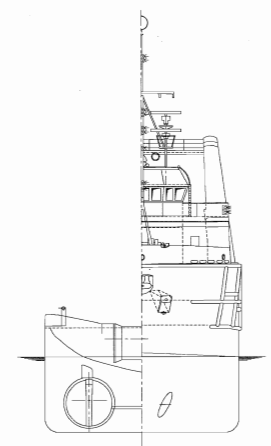
Dry bulk: 2 compressors: 15m³/hr (bar)
 Barite: approx. 60 tons/hr
 Bentonite: approx. 60 tons/hr
 Cement: approx. 60 tons/hr
Fuel oil: 1 x 150m³/hr, at 75 m.l.c. (8,8bar)
Drillwater: 2 x 150m³/hr, at 75 m.l.c. (8,8bar)
Potable water: 1 x 150m³/hr, at 75 m.l.c. (8,8bar)
Liquid mud: 2 x discharge/circulation pumps.
 Capacity: 80m³/hr, at 75 head (18 bar)
Brine: 1 x 80m³, at 75 m.l.c.
Base oil: 1 x 80m³/hr, at 75 m.l.c. (9 bar)
Couplings: Weco or Avery Hardol, 4" (bar)

This vessel specification is given in good faith and assumed to be correct.

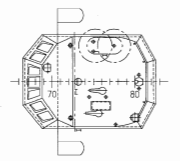
Dimensions
 Length O.A. : 67,68 m
 Length B.P. : 59,40 m
 Breadth, moulded : 14,33 m
 Depth, moulded : 6,90 m
 Draft (summer) : 5,98 m



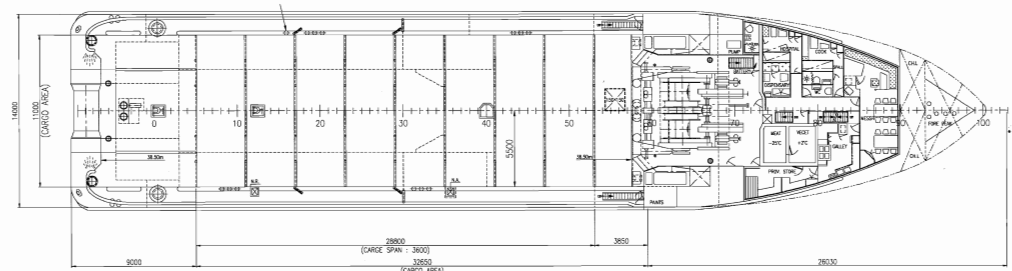
ELEVATION VIEW



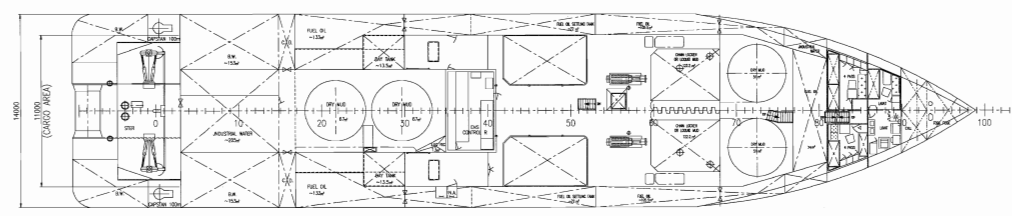
BR DSE DECK



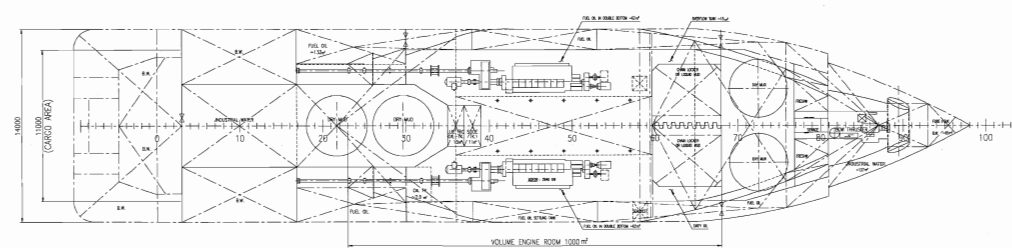
PEEL DECK
PILOT DECK



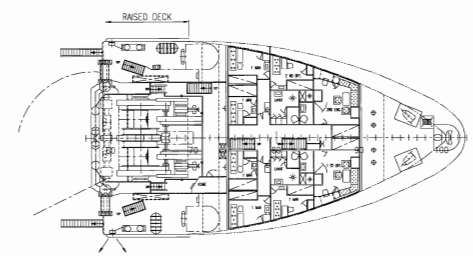
MAIN DECK



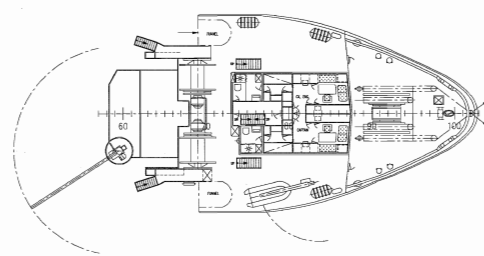
TWEEN DECK



TANK DECK



FORECASTLE DECK I



FORECASTLE DECK II